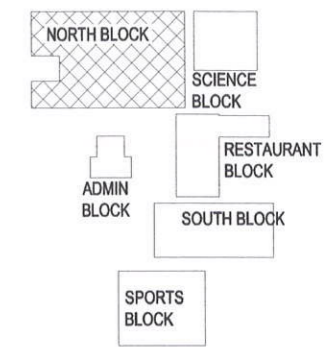


SITE PLAN

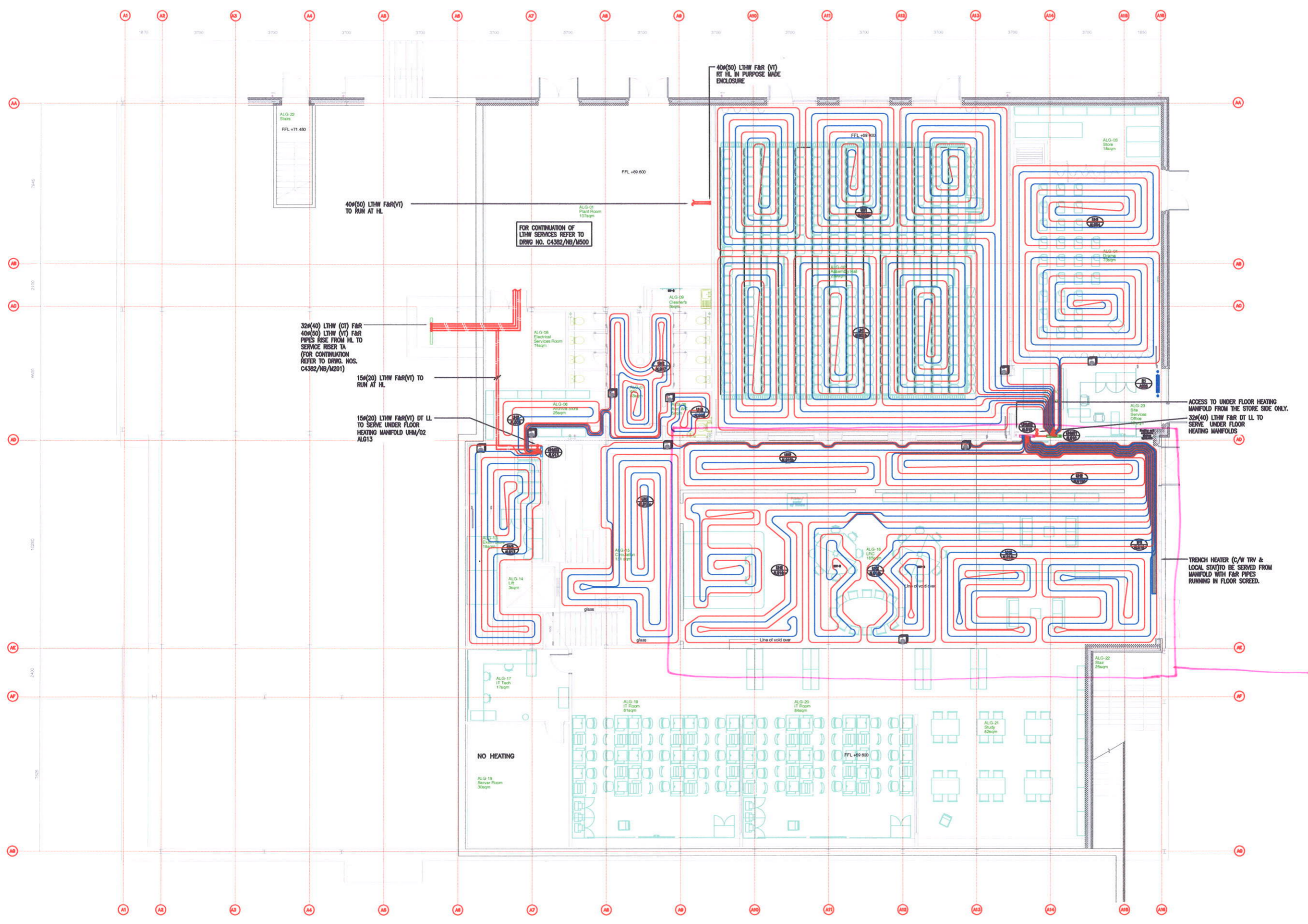


LEGEND

- FD/TA FROM BELOW/TO ABOVE
- FA/TB FROM ABOVE/TO BELOW
- RTA RISE TO ABOVE
- DTB DROP TO BELOW
- LL LOW LEVEL
- HL HIGH LEVEL
- CV CEILING VOID
- AVH AIR HANDLING UNIT HEATING
- CHW CHILLED WATER
- LTHW LOW TEMPERATURE HOT WATER
- FAR FLOW & RETURN
- CT CONSTANT TEMPERATURE
- VT VARIABLE TEMPERATURE
- IS ISOLATING VALVE
- CS COMMISSIONING SET

— PIPERWORK AT HIGH LEVEL
 — PIPERWORK IN CEILING VOID
 — PIPERWORK AT LOW LEVEL
 — BELOW GROUND/FLOOR

THE LAYOUT OF THE UNDER FLOOR HEATING SYSTEM IS INDICATIVE ONLY. THE EXACT AREA/ROUTE SHALL BE BY SPECIALIST UNDER FLOOR HEATING CONTRACTOR.



This is the lower ground floor heating

APPROVAL/COMMENT

rev	details	date
C	GENERALLY UPDATED & MANIFOLDS RELOCATED	27-01-10
B	REVISED TO SUIT EMPLOYERS TEAM COMMENTS AND GENERALLY UPDATED	03-07-09
A	FOR APPROVAL/COMMENT	08-06-09

ELMSTEAD MECHANICAL SERVICES

1st Floor - Bates Business Centre
The Old Brickworks, Church Road,
Harold Wood, Essex RM3 0JF
Tel. 01708 378787
Fax. 01708 371836
E-Mail info@elmstead.co.uk WWW.elmstead.co.uk



project **WREN ACADEMY-FINCHLEY NORTH BLOCK**

title **LOWER GROUND FLOOR HEATING LAYOUT**

scale drawn by date drawing no.

NORTH BLOCK LOWER GROUND FLOOR PLAN

BASED ON STRUCTURAL DRAWING 300-01-01 F (REV 23 APR)

BASED ON ARCHITECTURAL DRAWING 300-01-02 F (REV 23 MAY)

BASED ON FURNITURE DRAWING 300-01-03 F (REV 08 APR)

BASED ON CEILING DRAWING 300-01-04 F (REV 27 MAY)